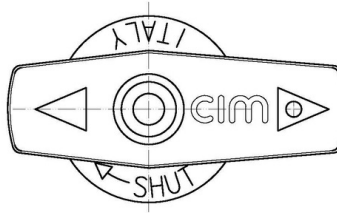
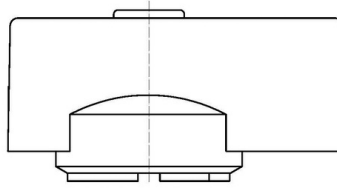


Cim 952

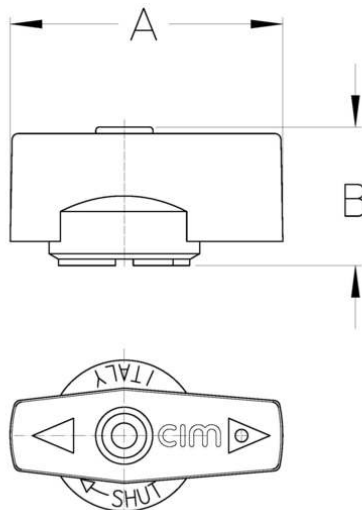
MANIGLIA IN ALLUMINIO SERIE Cim 150 - 170



Realizzato in ottemperanza ai requisiti gestionali della norma EN ISO 9001.
Accessorio/Ricambio originale per prodotti Cimberio.

Garanzia 2 anni.

DISEGNO TECNICO E TABELLA



A	43
Grms.	8
B	22

CERTIFICAZIONI

